

Title: Installation and Upgrade Instructions for MotionWorks IEC v3

Product(s): MotionWorks IEC (ver. 3)

Doc. No. PN.MWIEC.04

This document covers the installation and registration of MotionWorks IEC v3.x.x. The installation procedure is the same for both the Express and Pro versions of the software. Three main topics will be discussed:

1. First Time Installations
2. Upgrading Previous Releases
3. Software Registration

First Time Installations

The installation of MotionWorks IEC v3 requires Administrator access on the target PC. If the installation is not successful due to lack of administrator access (figure 1), contact your company's computer help desk.

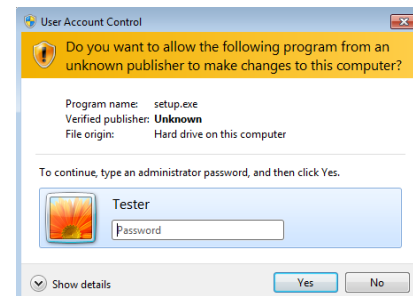


FIGURE 1

The online registration requires access to an active internet connection. If connected through a firewall, it should be configured to allow the registration process to communicate to the registration server. Alternately, phone activation can be used.

The installation package has no prerequisites for Windows 7 and Windows 8. For Windows XP, however, MotionWorks IEC v3 requires that the [Microsoft .NET framework v3.5](#) be installed before running the installation package.

The software may take several minutes to install and invokes more than one installer. There are processes that occur in the background, so progress bars are not always updated. Depending on the speed of your PC, you may see DOS command windows opening and closing. This is normal.

Upgrading Previous Releases

Software upgrade policy: Free upgrades are provided within any major version number of the product to another version with the same major version number. For example, any version 3.0.x can be upgraded to versions 3.1.x, 3.2.x, etc. without obtaining a new license key.

Note that it is only possible to upgrade from Express to Express, or from Pro to Pro versions.

Title: Installation and Upgrade Instructions for MotionWorks IEC v3

Product(s): MotionWorks IEC (ver. 3)

Doc. No. PN.MWIEC.04

Upgrading from version 1.x or 2.x to version 3.x: Yaskawa’s software policy does not define a change in major revision as an upgrade. A new license is required. Licenses are available through standard Yaskawa sales channels and can be obtained by purchasing any of the following part numbers:

	MotionWorks IEC Express v3.x	MotionWorks IEC Pro v3.x
Electronic License	PDE-U-IE3SE	PDE-U-IE3PE
Dongle License	N/A	PDE-U-IE3PH

Running side-by-side installations of different MotionWorks IEC versions: It is possible to have MotionWorks IEC v3 installed concurrently with version 1.x and/or version 2.x. However, if version 1.x is to be installed or updated, no other versions of MotionWorks IEC can be present or the software will not function properly.

Software Registration

Once the MotionWorks IEC is installed, it will run for up to 30 days before the registration process must be completed. When you launch MotionWorks IEC v3, you will see a dialog box (figure 2) showing the days remaining in the trial as well as buttons to begin the registration process. There are two methods of licensing: Dongle licensing and Electronic licensing.



FIGURE 2

Dongle Licensing: When dongle licensing is used, simply connect the dongle into an available USB port before launching MotionWorks IEC v3. The first time that you connect with the dongle, a dialog will appear asking to register the USB dongle (figure 3). Click the ‘Register Online’ to begin the registration process. Registration is important to receive notifications of product updates and issues.

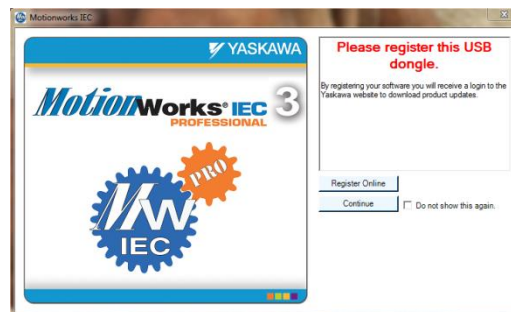


FIGURE 3

Electronic Registration: Electronic Registration can be done two ways: Online or By Phone.

Title: Installation and Upgrade Instructions for MotionWorks IEC v3

Product(s): MotionWorks IEC (ver. 3)

Doc. No. PN.MWIEC.04

Online Registration: Press the “Activate Online” button to register the software via the internet. This will launch a web browser (figure 4) for entering the user information and the software registration key (Serial #). Submitting this information will take you to the license validation server (figure 5). Press “Activate” to activate your license.

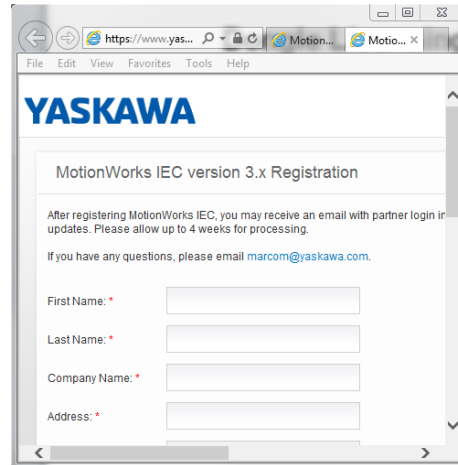


FIGURE 4

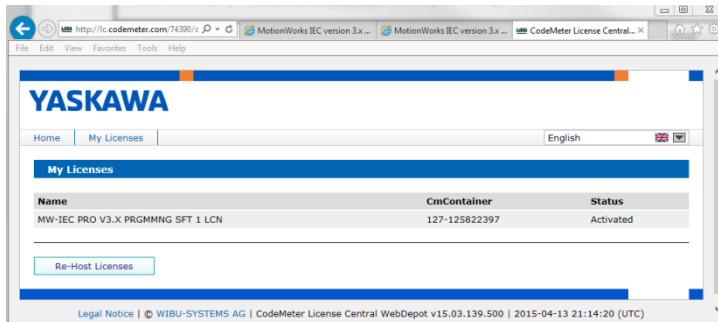


FIGURE 5

Registration by Phone: If no internet access is available, the software can be registered by calling Yaskawa at (800) YASKAWA. The technical services representative will ask you for the Installation ID that is displayed when the “Activate by Phone” button is clicked (figure 6). Once verified, an Activation Code will be provided to activate your software.

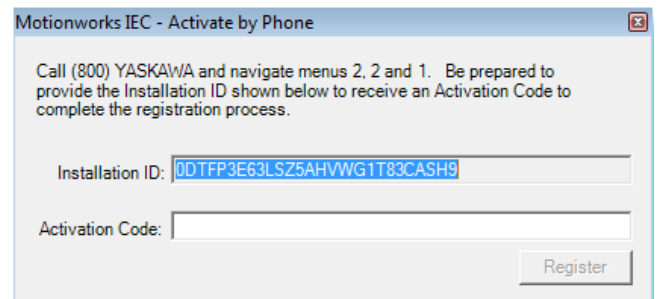


FIGURE 6